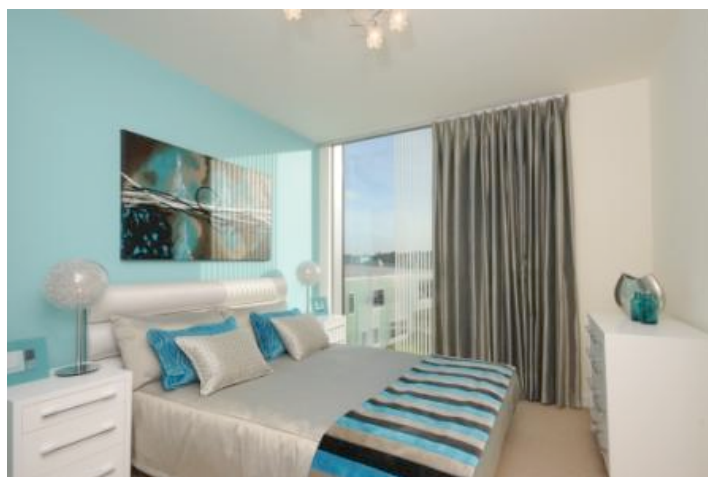




PRESS RELEASE  
27/01/2012

**NEW ATRIUM SHOW APARTMENTS UNVEILED**  
**Greenwich Creekside open weekend will run from 27 to 29 January 2012**



*Photograph of a bedroom interior at the Atrium, Greenwich Creekside  
More external and internal images are available on request*

Telford Homes will be unveiling Atrium's new show apartments at an exclusive champagne reception for registered clients on Thursday 26 January 2012. Atrium is the third and penultimate building to be released at Greenwich Creekside and features an unusual indoor garden centrepiece.

There will be a further opportunity to explore the distinctive three-sided, eight-storey Squires & Partners designed building during Atrium's open weekend, which runs from 27 to 29 January 2012. There are a total of 49 apartments available for purchase with prices starting from £247,000.

The selection of one, two and three-bedroom homes boast floor-to-ceiling windows that offer exceptional views across London, neutral decor with wood veneer flooring and high quality fixture and fittings. Telford Homes' high specification includes integrated Smeg appliances in the contemporary designed kitchens and stylish white bathroom suites as standard. For the ultimate in Urban chic, a collection of premium specification apartments are located on the seventh floor of the Atrium.

Apartments are accessed by open deck-style landings that overlook the bright and airy ground-to-roof atrium with its internal garden. The triangular glazed ceiling of the Atrium frames the sky above keeping the elements at bay, so residents can enjoy the great outdoors all year round with fresh air continuously circulating.

Greenwich Creekside benefits from a 24-hour concierge service and residents have the option of secured basement car parking and ample bicycle storage. The development is conveniently located within a 10-minute walk of Greenwich town centre, which has a huge amount to offer from national historic treasures to vibrant bars and restaurants. Residents will also be able to take advantage of the soon to open Meridian Fitness gymnasium. Set to open in spring 2012, the members only gymnasium will be located on the ground floor of Greenwich Creeksides' Adagio Apartments.

Exceptional rail links offer rapid access to London Bridge, for the City and West End, Canary Wharf and Stratford with Cutty Sark and Greenwich DLR stations a five-minute walk from Greenwich Creekside and Greenwich Mainline station also nearby. Pedestrians and cyclists can use the Greenwich Foot Tunnel that runs under the River Thames to reach the Isle of Dogs at Island Gardens.

To register your interest in the Atrium and to receive your personal invitation to the champagne launch, please contact the Greenwich Creekside sales team on 020 8694 8186 or visit [www.greenwichcreekside.com](http://www.greenwichcreekside.com). The sales office on 133 Creek Road, Greenwich, is open daily and the sales team will be on hand to take visitors around the show apartments, discuss personal preferences and work with potential buyers to identify the best apartment style to meet their requirements.

## **ENDS**

### **For further information, please contact:**

Annabel Turbutt-Day at FTI  
Tel: 020 7269 7107  
Email: [annabel.turbutt-day@fticonsulting.com](mailto:annabel.turbutt-day@fticonsulting.com)

Naomi Galt at FTI  
Tel: 0207 269 9351  
Email: [naomi.galt@fticonsulting.com](mailto:naomi.galt@fticonsulting.com)

### **Notes to editors:**

#### *About Greenwich Creekside*

Homes at Greenwich Creekside are spread across four superbly designed buildings by architects Squire & Partners. The sleek, modern buildings range from 8 to 17 storeys in height and are rendered in steel and glass to allow natural light to flood in. The Vertex, which is 50 per cent sold from off-plan marketing, and The Atrium are both set for completion in the first quarter of 2012, and Adagio and Cavatina are now build complete with final apartments ready for occupation.

Greenwich Creekside is set to create a new artistic quarter and takes its direction from the Laban Dance Centre, which is located adjacent to the site. The landscaped piazza designed is designed to encourage people to mix and the scheme will include new shops and restaurants, pedestrianised streets and relaxing gardens. Exhibition and performance spaces, a new jazz venue and an artists' village have also been factored into the overall plans to support the local artistic community and provide superb new cultural venues.

#### *About Telford Homes*

Telford Homes is an AIM listed new homes developer that delivers high quality mixed-tenure developments around East London. The Company has formed long term partnerships with key London Boroughs to realise their commitment to regeneration and the formation of sustainable new communities. Telford Homes' brand values focus upon value-for-money and excellent delivery of both product and service.

Telford Homes' high standards and exceptional customer service have resulted in a number of awards; most recently we were awarded a 'Gold Award' by the Royal Society for the Prevention of Accidents (RoSPA) for our Occupational Health and Safety, award wins from 2009/2010 include the prestigious Homebuilder of the Year (British Home Awards), four NHBC Seals of Excellence, a Commendation for Best Development Project (Matchmakers Wharf) at the British Homes Awards and our 2010 customer satisfaction results illustrate that over 97% of customers would recommend Telford Homes. Most recently, the construction team at Greenwich Creekside were chosen as South East regional winners in the NHBC Quality Awards 2011 & go forward to national finals in the Spring.

For more information please visit the Telford Homes website at [www.telfordhomes.plc.uk](http://www.telfordhomes.plc.uk).